

2020-08

# Classification of Emotions Induced by Horror and Relaxing Movies Using Single-Channel EEG Recordings

Amir, Jalilifard

Institute of Advanced Engineering and Science (IAES)

---

---

<http://ar.iub.edu.bd/handle/11348/463>

*Downloaded from IUB Academic Repository*

# Classification of emotions induced by horror and relaxing movies using single-channel EEG recordings

Amir Jalilifard<sup>1</sup>, Amir Rastegarnia<sup>2</sup>, Edinaldo Birgante Pizzolato<sup>3</sup>, Md Kafiul Islam<sup>4</sup>

<sup>1,3</sup>Department of Computer Science, Federal University of Sao Carlos, Brazil

<sup>2</sup>Department of Electrical Engineering, Malayer University, Iran

<sup>4</sup>Department of Electrical and Electronic Engineering, Independent University, Bangladesh

## Article Info

### Article history:

Received Jun 12, 2019

Revised Feb 2, 2019

Accepted Feb 9, 2019

### Keywords:

EEG dynamics

Electroencephalography

Emotion classification

Fear

K-nearest neighbors

Relaxation

Short-time fourier transform

Single-channel

Stationary wavelet

Support vector machine

## ABSTRACT

It has been observed from recent studies that corticolimbic Theta rhythm from EEG recordings perceived as fear or threatening scene during neural processing of visual stimuli. In additions, neural oscillations' patterns in Theta, Alpha and Beta sub-bands also play important role in brain's emotional processing. Inspired from these findings, in this paper we attempt to classify two different emotional states by analyzing single-channel EEG recordings. A video clip that can evoke 3 different emotional states: neutral, relaxation and scary is shown to 19 college-aged subjects and they were asked to score their emotional outcome by giving a number between 0 to 10 (where 0 means not scary at all and 10 means the most scary). First, recorded EEG data were preprocessed by stationary wavelet transform (SWT) based artifact removal algorithm. Then power distribution in simultaneous time-frequency domain was analyzed using short-time Fourier transform (STFT) followed by calculating the average power during each 0.2s time-segment for each brain sub-band. Finally, 46 features, as the mean power of frequency bands between 4 and 50 Hz during each time-segment, containing 689 instances—for each subject —were collected for classification. We found that relaxation and fear emotions evoked during watching scary and relaxing movies can be classified with average classification rate of 94.208% using K-NN by applying methods and materials proposed in this paper. We also classified the dataset using SVM and we found out that K-NN classifier (when  $k = 1$ ) outperforms SVM in classifying EEG dynamics induced by horror and relaxing movies, however, for  $K > 1$  in K-NN, SVM has better average classification rate.

Copyright © 2020 Insitute of Advanced Engineeering and Science.

All rights reserved.

## Corresponding Author:

Md Kafiul Islam,

Senior Member of IEEE,

Department of Electrical and Electronic Engineering,

Independent University, Bangladesh,

Academic Block, Level 5 6, Plot-16, Block-B, Bashundhara, Dhaka-1229.

Tel: +880-1730871457

Email: kafiul\_islam@iub.edu.bd

## 1. INTRODUCTION

In recent years, emotional interaction between humans and machines has been established as an interesting research area in brain-computer interface (BCI) applications [1]. Out of many studies for emotion recognition, two major categories of studies are most common; one of them relies on tracking the facial expressions [2, 3], and the other one records the brain signals from the central nervous system by different brain recording techniques such as electroencephalography (EEG), electrocorticography (ECoG), and functional magnetic resonance imaging (fMRI) during experiencing different emotional states. Among these recording techniques,

EEG is one of the most suitable because it's non-invasive, easy-to-use, and low-cost compared to others and it has also been proven to show informative features in response to a particular emotional state [4–6].

The frontal brain's activity has been found to be responsible for emotional response [7]. Another study reported similar findings that frontal EEG asymmetry can serve as both moderator and mediator of emotions [5]. Inspired from these findings, advanced engineering techniques such as signal processing, machine learning and human-computer interaction have been started to be applied in order to investigate EEG-based emotion recognition [8, 9]. Such investigations focus broadly on two aspects: studying the EEG signal's dynamics through different emotional experiences [7, 10], and processing or classification of EEG signals during each emotional state [11, 12]. Different emotions such as sadness, happiness, fear, disgust, anger, joy, and relaxation have been studied by tracking EEG dynamics during such emotional states. In some of the studies, emotions are classified in two broad groups: (1) negative emotions (i.e. sadness, disgust, anger, fear); and (2) positive emotions (i.e. joy, happiness, relaxation) [13–15]. Out of these emotions, fear and relaxation have been considered in few recent literature [10, 16, 17].

In order to establish emotional interaction with smart-TV or computers, emotions must be detected with reasonable accuracy by a reliable system which is robust against artifacts and other interference. There are several studies found that concentrated on EEG band power for classification of different emotions. Iacoviello et al. proposed a real-time EEG-based algorithm for classifying self-induced emotions [11] where the subjects were shown a group of symbols to induce different emotions such as disgust, fear, anger, and hunger and finally they achieved an average classification accuracy of 90% using support vector machine (SVM). In [18], a movie induction experiment was performed which spontaneously led the subjects to get real emotional states and classification accuracy of 87.53% using SVM with linear kernel was reported at the end. Naji et al. performed another emotion classification experiment through a music listening task by recording EEG from forehead and reached an average classification rate of 87.05% using SVM, K-NN and CFNN while applying CFNN, the best accuracy of 93.66% was obtained [12]. Using a deep learning network as classifier in [19] along with principal component analysis (PCA) as feature extraction, the authors reported classification accuracy of 46.03% and 49.52% to separate valence and arousal respectively. On the other hand, Mu et al. used a 62-channel EEG recorder for classifying between happiness and sadness on 10 subjects evoked by the images of smile and cry facial expressions and using SVM, they achieved classification accuracies of  $93.5\% \pm 6.7\%$  for 3s-trials and  $93.0\% \pm 6.2\%$  for 1s-trials. They also observed that *gamma* band is more suitable for EEG-based emotion classification [20].

In this paper, we used a single dry electrode based EEG recorder placed over left frontal cortex (as a simplest low-cost solution) to recognize fear and relaxation through movie screening. Then we attempted to classify EEG dynamics related to fear and relaxation with an acceptable accuracy. We also propose an artifact removal algorithm based on stationary wavelet transform that has been found to improve the final classification rate in emotion recognition task.

## 2. BACKGROUND

### 2.1. Short time fourier transform

In order to see the frequency variances in time, we need a mathematical tool that helps to understand the frequency changes during a specific time. The time-frequency representation of signal can be obtained in different manners. Short duration of signal with window function are extracted using short-time Fourier transform (STFT) and then, its frequency representation is calculated:

$$F_x(t, f; h) = \int_{-\infty}^{+\infty} x(u)h^*(u-t)e^{-i2\pi uf} du \quad (1)$$

where  $h(t)$  refers to the sliding analysis window of *STFT*. For a finite energy window it can be represented as:

$$x(t) = \frac{1}{E_h} \int_{-\infty}^{+\infty} \int_{-\infty}^{+\infty} F_x(u, f; h)h(t-u)e^{i2\pi tf} dudf \quad (2)$$

Where

$$E_h = \int_{-\infty}^{+\infty} |h(t)|^2 dt \quad (3)$$

Consequently, STFT is considered as a tool that decomposes the signal into waveforms, and used to find the energy distribution in time-frequency space. Since STFT is easy to use and to understand [21], in this study it is used for decomposing EEG sub-bands and presenting the time-frequency dynamics.

## 2.2. Stationary wavelet transform

The recorded EEG data are contaminated by artifacts with electrooculographic (EOG) and electromyographic (EMG) origins. In order to minimize the so-called artifacts, stationary wavelet transform was applied. In recent years, Wavelet based denoising methods have attracted much attention for biomedical signal analysis, because it is suitable for non-linear and non-stationary signals [22], such as EEG. The choice of wavelet transform over other methods (e.g. independent component analysis (ICA), empirical mode decomposition (EMD), adaptive filtering, etc.) is motivated by its capability to decompose single-channel EEG data into different frequency bands with high temporal resolution followed by easier denoising technique [22]. Another advantage of wavelet-based methods is its lower computational complexity compared to ICA and EMD. In addition, unlike adaptive filtering or regression based techniques, it doesn't require any separate reference artifact channel. There are several types of wavelet transform such as discrete wavelet transform (DWT), continuous wavelet transform (CWT), wavelet packet transform (WPT), stationary wavelet transform (SWT), etc. DWT is the simplest wavelet transform technique, although, we chose SWT for its advantage over DWT due its translational invariance property (small shift in signal doesn't cause significant changes in wavelet coefficients and large variations in distribution of energy in different wavelet scales) [23]. As a result, during signal reconstruction, no (or minimal) distortion in signal occurs [24–26].

## 2.3. Classification

### 2.3.1. K-nearest neighbors

The nearest neighbors searching is the following: given a set  $S$  of  $n$  data points in the feature space,  $X^D$ , the task is to process these data points, so that given any query point  $q \in X^D$ , the  $K$  nearest points  $\{s_1, s_2, \dots, s_k\} \in S$  to  $q$  be reported as quick as possible. If  $x$  is an arbitrary instance defined by feature vector as  $\langle a_1(x), a_2(x), a_3(x), \dots, a_n(x) \rangle$ , where  $a_r(x)$  indicates the value of  $r$ th attribute of  $x$ , therefore the distance is calculated by  $d(x_i, x_j)$  where:

$$d(x_i, x_j) = \sqrt{\sum_{r=1}^n (a_r(x_i) - a_r(x_j))^2} \quad (4)$$

Giving labeled training, K-NN partitions the feature space to polygonal-like sections where each polygon contains all the nearest neighbors to a specific point in feature space. This algorithm can be refined by giving a weight coefficient based on the distance of each points to the query point. Dudani et al. introduced a weighted voting method for K-NN, called the distance-weighted k-nearest neighbor rule (WKNN) [27]. In WKNN, the closer neighbors are weighted more heavily than the farther ones.

### 2.3.2. Support vector machine

Support vector machine (SVM) is a promising method to classify both linear and non-linear datasets. It uses a non-linear mapping in order to transform data into a higher dimension. The idea is to find the maximum marginal hyperplanes (MMH) or widest street [28] between separable areas among infinite number of separating lines, in order to minimize the classification error. The area between two separating lines is called *plane* and the term *hyperplane* is used to refer the ideal decision boundary [29]. Hyperplane can be written as  $W \cdot X + b = 0$  where  $W$  is weight vector,  $X$  is training tuple and  $b$  is the offset parameter as shown in Figure 1.

Considering  $b$  as an additional weight, the points that are above and under the separating plane satisfy

$$y_i(w_0 + w_1x_1 + w_2x_2) \geq 1, \forall i. \quad (5)$$

where  $y_i$  is +1 if the point is above the hyperplane and -1 when it falls under the hyperplane. Using Lagrangian formulation the MMH is written as a decision boundary.

$$d(X^T) = \sum_{i=1}^l y_i \alpha_i X_i X^T + b_0 \quad (6)$$

where  $X_i$  is support vector,  $X^T$  is the test tuple and  $y_i$  is the class label of  $i^{th}$  support vector.

Given the test tuple  $X^T$ , the output tells in which part of the plane the test instance falls. If the result is a black point, then it falls on the top of plane and belongs to the black class and in case of being a white, it falls under hyperplane and belongs to white class. When instances aren't linearly separable, SVM transforms data to a new dimension in which instances related to each class will be separable linearly. Rather than the size of data, the complexity of the learned class is characterized by support vectors. Hence, SVM is less prone to over-fitting problem [29].

Several investigations show that in competition among sophisticated algorithms —like neural network and support vector machine —and simple ones —for example, k-nearest neighbors —, the clear winner isn't necessarily the more elaborate one [30, 31]. In this study we intend to classify emotions using SVM and K-NN, so as to find which algorithm performs better in emotion classification.

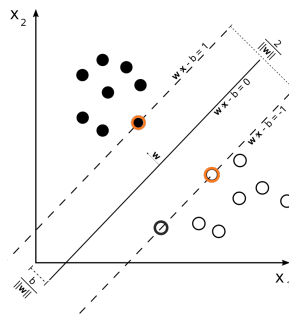


Figure 1. SVM tends to find the widest hyperplane. Support vectors are shown with a red border [32]

### 3. METHODS AND MATERIALS

#### 3.1. Participants and environmental protocol

Nineteen healthy college/university students aged 19-32 years old (14 males, 5 females) participated in this experiment of EEG recording. The EEG data from 11 subjects were excluded from analysis later due to presence of excessive noise or major movement artifacts —such as touching forehead and/or EEG equipment (6 subjects)—or because the subject reported that the movies were already watched by them before and thus fear emotion was not elicited in them at all (5 subjects). Before starting the experiment, all the participants were asked to sign a consent form after careful reading and then they were requested to sit still. Also, in order to avoid bias, no technical or general information was given to the participants about the experiment. This is different from some other investigations where they have been asked to focus on each corresponding emotion to a picture or movie clip, or the feeding behaviors are controlled 24 hours before data acquisition [33, 14]. Our final cohort comprised of 8 subjects (6 males and 2 females). The experiment was carried out in a dark small room using an LCD monitor placed 50 cm away from the subject. The place was devoid of any noise or interruption. The subjects were requested not to stand up and not to remove the EEG headset immediately after finishing the experiment. At the end, subjects themselves evaluated their level of fear for horror movie and their general relaxation state during the relaxing movie, by giving a number between 0-10 where 0 means no fear at all and 10 means highest level of fear.

#### 3.2. Stimuli

Acquiring meaningful data is critical in any signal processing application. However, acquiring data corresponding to a particular emotional state is challenging due to the subjective nature of emotions as well as cognitive dependency of physiological signals that requires a specific emotion must be elicited internally in participants [34]. Thus, in order to stimulate fear and relaxation emotional states in subjects, a set of combined movie clips with a total duration of 288 sec was used without any break time during the experiment. This experiment was consistent with few previous studies where video clips were used as emotional stimuli [35–37].

As shown in Table 1, the video shown to the subjects consists of 2 movie clips which elicit two target emotional states such as positive (relaxation) and negative (fear). The selection criteria for movie clips are: (a) the movie needs to be easily understood without explanation; and (b) both movies have to elicit single desired emotion.

Table 1. Video Clip Description

Number	Film title	Target emotion	Year
1	The Elavator	Neutral	2011
2	Matra	Positive (Relaxation)	2012
3	Lights out	Negative (Fear)	2013

Before starting the EEG recording and data acquisition process, several experimental arrangements were carried out in order to find the best situation for obtaining the best possible data. Through these experiments, we found out that during the first minute of test, users tend to have some movements, such as trying to touch the EEG device, strong head movements and rubbing eyes, that cause major artifacts. In order to avoid this phase, we decided to use a neutral movie during the first 90 seconds, which neither arouses negative nor positive emotion. The neutral movie is followed by relaxing (60 seconds) and horror movies (138 seconds). The process of our experiment is depicted in Figure 2.

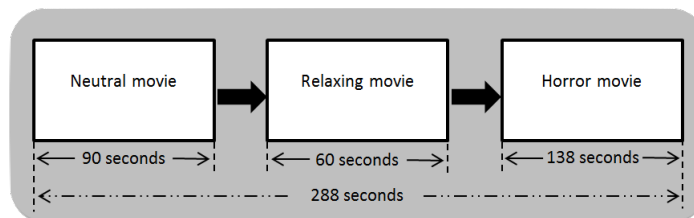


Figure 2. The process of movie broadcasting

### 3.3. EEG recording

One of the issues in EEG-related experiments is that the setup of the EEG recorder is not straight forward because of wet-electrodes. thus we have used a wireless EEG headset [38] from NeuroSky with a single dry-electrode attached to the forehead at position Fp1 as shown in Figure 3), a reference electrode on the ear clip and the sampling frequency was 512 Hz.

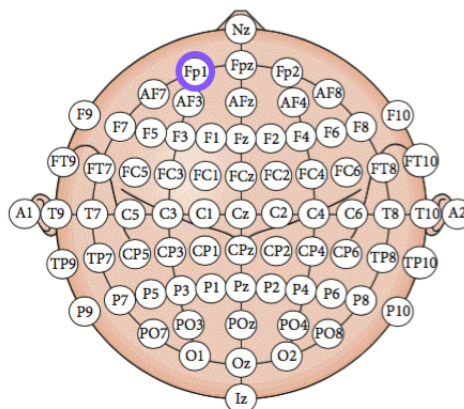


Figure 3. Electrode placement for single-channel EEG.  
Channel Label: Fp1 [39]

### 3.4. Methods

The recorded data were analyzed by step-by-step processes including feature smoothing, signal processing, feature extraction and finally classification for emotional state as depicted in Figure 4. One of the purposes of this study is also to evaluate the effect of the artifact removal algorithm on the classification stage. In order to do that, two types of training data were collected: (1) artifactual and (2) artifact-free.

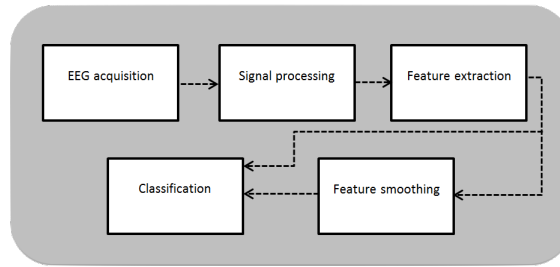


Figure 4. The flowchart of emotion classification

**3.5. EEG preprocessing**

EEG data were preprocessed on MATLAB (v8.3) platform (The MathWorks, Inc.) for correction of the stereotyped artifacts including eye blinks, eye movements, muscle artifacts and line noise, by denoising with the help of Stationary Wavelet Transform (SWT). A 6-level decomposition of SWT (with Haar as mother/basis wavelet) was applied on the recorded raw signal. The output of SWT is a set of detail (d1-d6) and final approximate coefficients (a6), representing non-overlapping high and low frequency bands respectively as shown in Table2.

Table 2. Frequency bands and the corresponding labels in training dataset

SWT Coef.(Level = 5, Fs = 512 Hz)	d1	d2	d3	d4	d5	d6	a5
Freq. Band (Hz)	128—256	64—128	32—64	16—32	8-16	4-8	0-4
EEG Rhythm Component			Gamma	Beta	Alpha	Theta	Delta

A modified universal threshold proposed by [40] was then applied on different decomposition levels of coefficients in order to separate potential artifacts from actual EEG rhythms. During denoising, the threshold value and threshold function are carefully selected according to the work by Islam et al. [41].

The threshold value is calculated by below equation followed by the expression of garrote threshold function 46 as given below:

Threshold value at level  $i$ ,

$$T_i' = K * \alpha_i * \text{sqrt}(2 * \ln(N)); \tag{7}$$

$N$  is the length of data,  $\alpha_i$  is the estimated noise variance for  $W_i$  which is the wavelet coefficients at the  $i_{th}$  decomposition level ( $W_i = a_i$  for approximation coefficient and  $W_i = d_i$  for detail coefficients)

Threshold function,

$$\delta_i = \begin{cases} x; & |x| \leq T_i' \\ T_i'^2/x; & |x| > T_i' \end{cases} \tag{8}$$

Where  $\delta_i$  is the garrote threshold function at each decomposition level of  $i$  and  $x$  is the signal value of the wavelet coefficients. During denoising, the choice of threshold parameter  $K$  is very critical in order to make sure that no distortion in the desired signal of interest [41] occurs. This is because the distinct frequency bands represent different EEG rhythms and some coefficients are more likely to contain artifacts than others. Finally, the artifact-reduced EEG signal is reconstructed back using the new set of wavelet coefficients after application of inverse SWT. The complete process flow of artifact removal is shown in Figure 5.

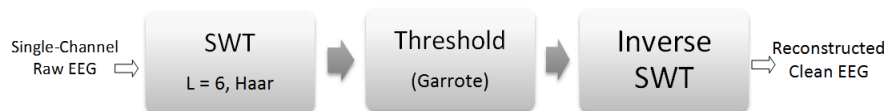


Figure 5. Artifact Removal Process Flow

**3.6. Signal processing and feature extraction**

EEG rhythms or sub-bands consisting of Theta (4–8 Hz), Alpha (8–12 Hz), Beta (12–30 Hz) and Gamma (30–50 Hz), related to relaxing and horror movies, were decomposed using Short-time Fourier transform (STFT). Each input time-series was divided into a sequence of segments with duration of 0.2 sec and then

the mean signal power was calculated for each frequency band during each of the time-segments. The self-reported forms from the subjects were used to exclude data related to the parts of horror movie that didn't carry any fear emotion. Finally, 46 features, as the mean power of frequency bands between 4 and 50 Hz during each time-segment, containing 689 instances (388 for scary and 301 for relaxing movie) for each subject, labeled with either 'Scary' or 'Relaxing', formed two training data-sets (artifact-free and artifactual).

#### 4. EXPERIMENTAL RESULTS AND DISCUSSIONS

K-nearest neighbors with Euclidean distance was used for emotions classification task. In order to avoid the over-fitting problem, a 10-folds cross-validation was applied on the datasets. In *k-fold* cross-validation, the dataset is segmented into *K* equal portions and then through *k* iterations, each time one of the folds is used as validation set and the *k-1* remaining folds are used for training. We tested the classification rate for *k* ranges between  $k = 1$  and  $k = \sqrt{n}$  where *n* is the number of instances in the dataset [42]. We also chose the *K* parameter to be odd numbers in order to avoiding ties [43].

Table 3. Frequency bands and the corresponding labels in training dataset

Frequency band	Frequency ranges(Hz)	Features considered for trianing	Meaning
Theta	4-7	F4 - F7	The mean energy for time segmentation of 0.2s
Alpha	8-12	F8 - F12	The mean energy for time segmentation of 0.2s
Beta	13-30	F13 - F30	The mean energy for time segmentation of 0.2s
Gamma	30-50	F30 - F50	The mean energy for time segmentation of 0.2s

We compared the results and found  $k = 1$  as the best K-NN parameter for both datasets with and without using artifact removal algorithm as shown in Table 4 and Table 5). For 7 subjects, applying SWT algorithm improved the classification rates between 1.32 % and 9.43%. Also, for 1 subject an insignificant decrease in classification rate (-0.58%) is seen. However, the datasets are unbalanced (388 instances of Scary movie and 301 instances of relaxing movie), but observing the confusion matrix shows an almost balanced state of wrongly classified instances for both 'Scary' and 'Relaxing' classes. Based on confusion matrix, we may calculate the true positive (TP) and false positive(FP) rates, as well. We show the results in details for both datasets —artifact-free and artifactual data —for K-NN algorithm since it gives the best classification result. For SVM the results are shown just for artifact-free dataset, however using SWT increased the classification rate in SVM, as well.

Table 4. The K-NN classification result for dataset without using SWT, k=1 and cross-validated with 10 folds

Subject	Gender	Classification rate	Avg. TP rate	Avg. FP rate
1	Male	91.146%	0.911	0.092
2	Male	91.001%	0.91	0.087
3	Male	88.679%	0.887	0.109
4	Male	93.468%	0.935	0.069
5	Female	90.420 %	0.915	0.11
6	Male	96.661%	0.96	0.033
7	Female	93.468%	0.935	0.065
8	Male	84.325%	0.843	0.843

Classification average rate: 91.146%

Table 5. The K-NN classification result for dataset after using SWT, k=1 and cross-validated with 10 folds

Subject	Gender	Classification rate	Avg. TP rate	Avg. FP rate
1	Male	90.566%	0.906	0.104
2	Male	95.791%	0.958	0.045
3	Male	93.759%	0.938	0.061
4	Male	95.791%	0.958	0.042
5	Female	95.21 %	0.952	0.051
6	Male	97.933%	0.979	0.021
7	Female	96.371%	0.964	0.036
8	Male	88.243%	0.882	0.119

Classification average rate: 94.208%



The best result was obtained for  $k = 1$ , however, we checked the results for all  $K$ 's between  $k = 1$  and  $k = \sqrt{(n)^2}$  weighted by  $1/distance$ . In Tables 6,7,8,9,10 and table 11 the results are shown for  $k = 3$ ,  $k = 5$  and  $k = 7$ .

Table 6. The K-NN classification result for datasets without using SWT, k=3 and cross-validated with 10 folds and distance-weighted

Subject	Gender	Classification rate	Avg. TP rate	Avg. FP rate
1	Male	86.792%	0.868	0.137
2	Male	87.227%	0.872	0.124
3	Male	82.293%	0.823	0.179
4	Male	91.436%	0.914	0.088
5	Female	84.905 %	0.849	0.158
6	Male	90.566%	0.906	0.093
7	Female	84.18%	0.842	0.158
8	Male	79.825%	0.798	0.212

Classification average rate: 85.903%

Table 7. The K-NN classification result for datasets after using SWT, k=3 and cross-validated with 10 folds and distance-weighted

Subject	Gender	Classification rate	Avg. TP rate	Avg. FP rate
1	Male	85.341%	0.853	0.158
2	Male	93.468%	0.935	0.062
3	Male	88.679%	0.887	0.109
4	Male	93.033%	0.93	0.069
5	Female	90.420 %	0.90	0.099
6	Male	96.661%	0.967	0.033
7	Female	93.468%	0.935	0.065
8	Male	84.325%	0.843	0.163

Classification average rate: 90.674%

Table 8. The K-NN classification result for datasets without using SWT, k=5 and cross-validated with 10 folds and distance-weighted

Subject	Gender	Classification rate	Avg. TP rate	Avg. FP rate
1	Male	84.18%	0.842	0.167
2	Male	86.937%	0.869	0.126
3	Male	80.69%	0.807	0.199
4	Male	87.373%	0.874	0.126
5	Female	81.422 %	0.814	0.198
6	Male	88.824%	0.888	0.111
7	Female	80.261%	0.807	0.203
8	Male	75.181%	0.752	0.255

Classification average rate: 83.108%

Table 9. The K-NN classification result for datasets after using SWT, k=5 and cross-validated with 10 folds and distance-weighted

Subject	Gender	Classification rate	Avg. TP rate	Avg. FP rate
1	Male	81.422%	0.814	0.197
2	Male	88.969%	0.89	0.106
3	Male	84.470%	0.845	0.155
4	Male	89.114%	0.891	0.108
5	Female	88.098 %	0.814	0.198
6	Male	92.527%	0.925	0.075
7	Female	91.291%	0.913	0.086
8	Male	80.841%	0.808	0.197

Classification average rate: 87.091%

Table 10. The K-NN classification result for datasets without using SWT,  $k=7$  and cross-validated with 10 folds and distance-weighted

Subject	Gender	Classification rate	Avg. TP rate	Avg. FP rate
1	Male	83.599%	0.836	0.173
2	Male	85.195%	0.852	0.142
3	Male	78.229%	0.782	0.782
4	Male	86.647%	0.866	0.136
5	Female	81.277 %	0.813	0.199
6	Male	87.518%	0.875	0.124
7	Female	79.1%	0.791	0.2
8	Male	74.165%	0.742	0.27

Classification average rate: 81.966%

Table 11. The K-NN classification result for datasets after using SWT,  $k=7$  and cross-validated with 10 folds and distance-weighted

Subject	Gender	Classification rate	Avg. TP rate	Avg. FP rate
1	Male	79.10%	0.791	0.223
2	Male	87.08%	0.871	0.124
3	Male	82.873%	0.829	0.172
4	Male	87.373%	0.874	0.127
5	Female	87.317 %	0.873	0.123
6	Male	91.891%	0.919	0.081
7	Female	88.824%	0.888	0.109
8	Male	77.358%	0.774	0.233

Classification average rate: 85.227%

For  $k = 1$ ,  $k = 3$ ,  $k = 5$  and  $k = 7$ , using the SWT caused having better average classification accuracies of +3.06%, +4.771%, +3.983% and +3.261%, respectively. For all the subjects except subject1, the classification rate after artifact removal was raised. Also we had the best result for subject7 with 11.3% improvement (for  $k=7$ ) in classification rate as shown in Figure 6, Figure 7, Figure 8 and Figure 9.

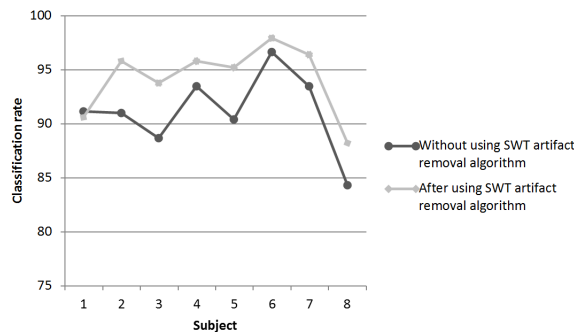


Figure 6. The classification rate for  $k=1$  before and after using SWT for artifact removal [39]

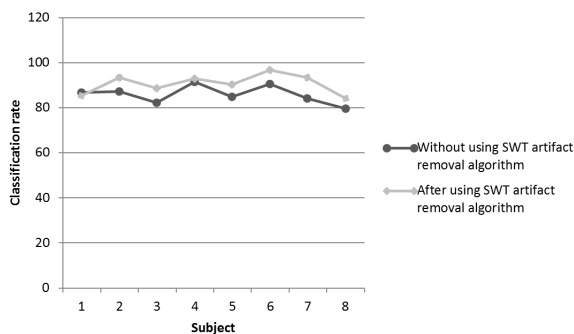


Figure 7. The classification rate for  $k=3$  before and after using SWT for artifact removal [39]

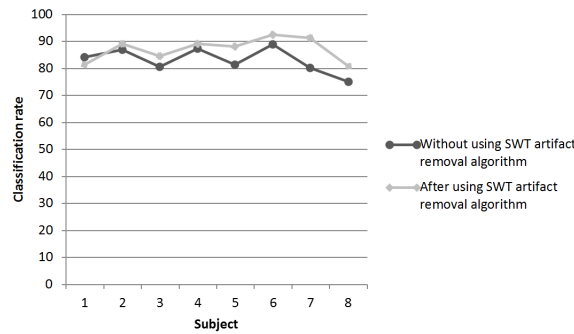


Figure 8. The classification rate for k=5 before and after using SWT for artifact removal [39]

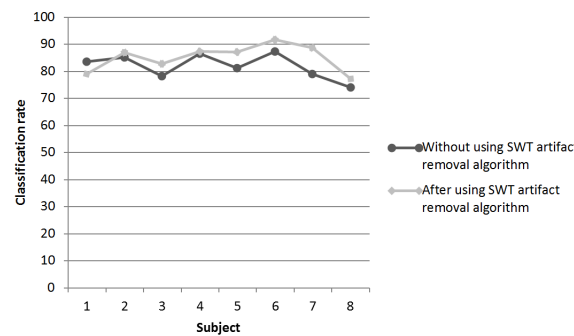


Figure 9. The classification rate for k=7 before and after using SWT for artifact removal [39]

In order to find the best power spectrum feature for emotion classification, we repeated the classification task for each of the features mentioned in Table 3 for all the subjects, using the artifact-free datasets, when  $k = 1$ . As it is shown in Table 12, the best accuracy was obtained when a combination of all power spectrum features were engaged in emotion classification. Furthermore, the worst and the best average classification accuracies were obtained by Theta and Gamma bands with 65.368% and 94.208%, respectively. This finding is consistent with the result of the other studies in which it was mentioned that high frequency bands have a major role in emotional activities [18, 20].

Table 12. Classification accuracy of K-NN (K=1), using different power spectrum features

Subject	Gender	Theta	Alpha	Beta	Gamma	All
1	Male	59.07%	63.28%	76.052%	79.680%	90.566%
2	Male	60.232%	60.522%	80.87%	84.323%	91.001%
3	Male	56.603%	63.86%	78.229%	85.229%	93.759%
4	Male	63.57%	64.876%	81.132%	82.873%	95.791%
5	Female	64.005%	66.763%	85.050%	86.792%	95.210%
6	Male	76.947%	76.629%	91.07%	90.938%	97.933%
7	Female	76.777%	75.907%	86.937%	85.486%	96.371%
8	Male	65.747%	66.037%	80.406%	82.148%	88.243%
Classification average rate:		65.368%	67.234%	82.468%	84.683%	94.208%

In order to get the classification accuracy using SVM, the Pearson VII function-based universal kernel [44] was used along with 10-folds cross-validation and the cost parameters  $C : C \in \{10^{-5}, 10^{-4}, \dots, 10^2\}$ . Fear and relaxation were classified with 90.816% average classification rate as shown in Table 13.

The classification rate of K-NN, for  $K = 1$ , is higher than SVM, although, we don't claim that using exact nearest neighbors is the best classifier for emotion classification. This is because there is a main point of concern about the laziness of K-NN and its performance when the size —or the dimensionality— of training dataset is big. One way to overcome the so-called laziness problem can be using another type of nearest neighbor algorithm called approximate nearest neighbors (ANN) like locality sensitive hashing (LSH), in order to reduce the search space and consequently, having a fast instance-based classifier [45].

Table 13. Classification accuracies of power spectrum across different frequency bands using SVMs with 10-fold cross-validation and pearson VII function-based universal kernel

Subject	Gender	Theta	Alpha	Beta	Gamma	All
1	Male	58.926%	57.619%	75.762%	84.615%	91.146%
2	Male	63.135%	60.812%	86.066%	84.034	96.807%
3	Male	56.313%	60.812%	82.148%	89.55%	96.516%
4	Male	61.538%	59.216%	60.667 %	87.953%	96.516%
5	Female	65.021%	59.361%	66.473%	66.182%	72.133%
6	Male	58.505%	59.936%	88.394%	87.44%	98.092%
7	Female	74.6%	76.777%	83.744%	70.682%	85.195%
8	Male	56.894%	55.297%	70.537%	86.792%	90.13%
Classification average rate:		61.799%	61.257%	76.723%	82.178%	90.816%

## 5. CONCLUSION

In this paper, we investigated the characteristic of EEG dynamics for classification of relaxation and fear emotions. We conducted a set of experiments by designing 3 joint video clips with a total duration of 288 seconds. The participants neither were informed about the characteristic of the experiment, nor we asked them to focus on a specific mental task. Also, we didn't put any mental or physical limitations during the data acquisition. Experiments were carried out without interruption between each film. In the end, the data of 8 subjects, including 2 females and 6 males were collected. The short time Fourier transform was applied over raw EEG data in order to find the distribution of power for each frequency bands. The stationary wavelet transform was used for artifact removal. Finally, two datasets (artifactual and artifact-free) were obtained from each subject in order to be classified by K-NN and SVM. The best result were obtained by K-NN when  $K = 1$ . Using SWT increased the average classification rate for both K-NN and SVM. Using k-nearest neighbors as instance-based classification algorithm, we managed to classify the relaxation and fear emotions with average accuracy of 94.208%, when  $K = 1$ . Also, to find the best EEG feature for classifying fear and relaxation, we compared the classification results for power spectrum of differential asymmetry features and the best results were obtained using Gamma band, however, we had even a better result by using the combination of all EEG frequency bands between 4 to 50 HZ. The classification accuracy also estimated for SVM and it achieved an average classification accuracy of 90.816%.

The future development of this study will be focused on carrying out this experiment with more participants and more trials. Also, we would like to use other classification algorithms and to compare the results with those ones obtained results by SVM so as to find the most adequate classifier.

## REFERENCES

- [1] R. Picard, "Affective Computing," MIT Press, 2000.
- [2] K. Anderson and P. McOwan, "A real-time automated system for the recognition of human facial expressions," IEEE Trans. Syst., 2006, vol. 36.
- [3] T. Ruffman and J. D. Henry and V. Livingstone and L. H., "A meta-analytic review of emotion recognition and aging: Implications for neuropsychological models of aging Neuroscience and Biobehavioral Reviews," pp. 863–881, 2008.
- [4] P. Petrantonakis and L. Hadjileontiadis, "A novel emotion elicitation index using frontal brain asymmetry for enhanced EEG-based emotion recognition," IEEE Trans. Inf. Technol, 2011.
- [5] J. A. Coan and J. J. B. Allen, "Frontal EEG asymmetry as a moderator and mediator of emotion," Biological Psychology, 2004.
- [6] X. Li, B. Hu, T. Zhu, J. Yan, and F. Zheng, "Towards affective learning with an EEG feedback approach," in: Proceedings of the 1st ACM International Workshop on Multimedia Technologies for Distance Learning, 2009.
- [7] R. J. Davidson, "What does the prefrontal cortex "do" in affect: perspectives on frontal EEG asymmetry research," *Biological Psychology*, vol. 67, 2004.
- [8] Y. Liu, O. Sourina, and M. K. Nguyen, "Real-time eeg-based emotion recognition and its applications," in Transactions on computational science XII, Springer, pp. 256–277, 2011.
- [9] N. Jatupaiboon, S. Pan-ngum, and P. Israsena, "Real-time eeg-based happiness detection system," *The Scientific World Journal*, vol. 2013, 2013.

- [10] D. BL, S. JS, S. SK, M. MA, C. CS, C. VI, H. J, and K. MA., "Electrophysiological spatiotemporal dynamics during implicit visual threat processing," *Brain and Cognition*, vol. 91, pp. 54–61, 2014.
- [11] S. M. P. G. Iacoviello D., Petracca A., "A real-time classification algorithm for EEG-based {BCI} driven by self-induced emotions," *Computer Methods and Programs in Biomedicine*, pp. Published on-line, 2015. [Online]. Available: <http://www.sciencedirect.com/science/article/pii/S0169260715002217>
- [12] M. Naji, M. Firoozabadi, and P. Azadfallah, "classification during music listening from forehead biosignal," *Signal, Image and Video Processing*, DOI: 10, 2013.
- [13] R. E., G. D., C. T., and C. M., "Relationship between adult attachment patterns, emotional experience and EEG frontal asymmetry," *Personality and Individual Differences*, vol. 44, 2008.
- [14] L. Y. Y. and H. S., "Classifying different emotional states by means of EEG-based functional connectivity patterns," *PLoS ONE*. 2014;9(4), vol. 10., 2014.
- [15] J. A. Russell, "A circumplex model of affect," *Journal of Personality and Social Psychology* 39(6), 1161–1178, University of British Columbia, Canada, 1980.
- [16] E. M. Mueller, C. Panitz, C. Hermann, and D. A. Pizzagalli, "Prefrontal Oscillations during Recall of Conditioned and Extinguished Fear in Humans," *Journal of Neuroscience*, vol. 34, pp. 7059–7066, 2014.
- [17] A. I. and K. M., "Arousal vs relaxation: a comparison of the neurophysiological and cognitive correlates of vajrayana and theravada meditative practices," *PLoS ONE* 9:e102990, vol. 10., 2014.
- [18] X. W. Wang, D. Nie, and B. L. Lu, "Emotional state classification from eeg data using machine learning approach," *Neurocomput*, vol. 129, pp. 94–106, Apr. 2014. [Online]. Available: <http://dx.doi.org/10.1016/j.neucom.2013.06.046>
- [19] S. P. N. Suwicha Jirayucharoensak and P. Israsena, "EEG-Based Emotion Recognition Using Deep Learning Network with Principal Component Based Covariate Shift Adaptation," *The Scientific World Journal*, Sept 2014.
- [20] L. Mu and L. Bao-Liang, "Emotion classification based on gamma-band EEG," *Engineering in Medicine and Biology Society*, 2009.
- [21] V. Giurgutiu and L. Yu, "Comparison of Short-time Fourier Transform and Wavelet Transform of Transient and Tone Burst Wave Propagation Signals For Structural Health Monitoring," 4th International Workshop on Structural Health Monitoring, Stanford University, CA, Sept 2003.
- [22] S. Mallat, "A wavelet tour of signal processing: the sparse way," Academic press, 2008.
- [23] H. Guo and C. S. Burrus, "Convolution using the undecimated discrete wavelet transform," in *icassp*, pp. 1291–1294, 1996.
- [24] M. K. I. Molla, M. R. Islam, T. Tanaka, and T. M. Rutkowski, "Artifact suppression from eeg signals using data adaptive time domain filtering," *Neurocomputing*, vol. 97, 2004.
- [25] R. R. Coifman and D. L. Donoho, "Translation-invariant denoising," Springer, 1995.
- [26] D. Safieddine, A. Kachenoura, L. Albera, G. Birot, A. Karfoul, A. Pasnicu, A. Biraben, F. Wendling, L. Senhadji, and I. Merlet, "Removal of muscle artifact from EEG data: comparison between stochastic (ICA and CCA) and deterministic (EMD and Wavelet-based) approaches," *EURASIP Journal on Advances in Signal Processing*, 2012.
- [27] S. A. Dudani, "The distance-weighted k-nearest neighbor rule," *IEEE Transactions on System, Man, and Cybernetics*, vol. 6, pp. 325–327, 1976.
- [28] V.A.K.PSoman, R.Loganathan, "Machine Learning with SVM and Other Kernal Methods," Prentice-Hall of India Pvt.Ltd, 2011.
- [29] J. K. Han and Micheline, "Data mining: concepts and techniques," Morgan Kaufmann, 2011.
- [30] A. Ashari, I. Paryudi, and A. M. Tjoa, "Performance comparison between naive bayes," *Decision Tree and k-Nearest Neighbor in Searching Alternative Design in an Energy Simulation Tool , (IJACSA) International Journal of Advanced Computer Science and Applications*, vol. 4, no. 11, 2013.
- [31] F. Colas and P. Brazdil, "Comparison of svm and some older classification algorithms in text classification tasks," In *Artificial Intelligence in Theory and Practice*, pp. 169–178, 2006.
- [32] X. Q., Z. H., W. Y., and H. J., "Fuzzy support vector machine for classification of eeg signals using wavelet based features," *Medical Engineering and Physics*, vol. 31, pp. 858–865, 2009.
- [33] X. W. Wang, D. Nie, and B. L. Lu, "Emotional state classification from EEG data using machine learning approach," *Neurocomputing*, 2014.

- [34] R. Yuvaraj, M. Murugappan, N. M. Ibrahim, K. Sundaraj, M. I. Omar, K. Mohamad, and R. Palaniappan, "Optimal set of EEG features for emotional state classification and trajectory visualization in Parkinson's disease," *International Journal of Psychophysiology* 94, 2014.
- [35] C. IC and F. BH, "Autonomic specificity of discrete emotion and dimensions of affective space: a multivariate approach," *Int J Psychophysiol* 51:143–153, 2004.
- [36] L. RW, H. K, E. P, and F. WV, "Emotion and Autonomic Nervous-System Activity in the Minangkabau of West Sumatra," *J Pers Soc Psychol* 62:972–988, 1992.
- [37] E. Keogh, "A Gentle Introduction to Machine Learning and Data Mining for the Database Community," 2003.
- [38] D. Chatterjee, D. Das, A. Sinharay, "Cognitive load measurement - A methodology to compare low cost commercial EEG devices," *Advances in Computing, Communications and Informatics*, 2014.
- [39] S. P. N. Noppadon Jatupaiboon and P. Israsena, "Real-time eeg-based happiness detection system," *The Scientific World Journal*, vol. 2013, 2013.
- [40] M. K. Islam, A. Rastegarnia, A. T. Nguyen, and Z. Yang, "Artifact characterization and removal for in vivo neural recording," *Journal of Neuroscience Methods*, vol. 226, pp. 110–123, 2014.
- [41] M. K. Islam, A. Rastegarnia, and Z. Yang, "A Wavelet-Based Artifact Reduction from Scalp EEG for Epileptic Seizure Detection," 2015.
- [42] R. O. Duda, P. E. Hart, and D. G. Stork, "Pattern Classification," Wiley, 2001.
- [43] M. A., A. G. A., Hassanat, A. B. Alhasanat, Abbadi, "Solving the Problem of the K Parameter in the KNN Classifier Using an Ensemble Learning Approach," *International Journal of Computer Science and Information Security*, 2014.
- [44] B. Üstün, W. J. Melssen, and L. M. C. Buydens, "Facilitating the application of Support Vector Regression by using a universal Pearson VII function based kernel," *Chemometrics and Intelligent Laboratory Systems*, vol. 81, pp. 29–40, 2006.
- [45] P. Indyk and R. Motwani, "Approximate nearest neighbors: Towards removing the curse of dimensionality," pp. 604–613, 1998.